



POLICY APPROACH FOR CIRCULAR ECONOMY IN CENTRU REGION

Ovidia Caba
Regional Development Agency Centru
Director of the Regional Policies and Programming Unit

CHARACTERISTICS AND CHALLENGES OF THE CENTRU REGION REGARDING CIRCULAR ECONOMY

Economy, Environment, quality of life in urban and rural areas



- Low competitiveness of SMEs due to lack of technological update, rising labor costs
- Poor performance of the regional RDI system
- Labor productivity in industry and services below the EU average
- Material resources reuse rate (1.5% Romania vs 19% Netherlands)
- Low recovery of forest resources
- The effects of historical pollution in the former industrial platforms or mining operations (high level of land pollution on which the former chemical plants operated: Târnăveni, Făgăraș, Victoria, Copșa Mică, Zlatna, of tailings ponds and tailings dumps in the former mining areas (ex those from the Apuseni Mountains))
- Insufficient development of local road infrastructure and technical infrastructure in rural areas (water networks: 80.4% of ATUs, canal: 48.5% of ATUs, natural gas 54.3% of ATUs)
- Demographic decline, especially in rural areas, and an aging population
- Low municipal waste recycling rate (13.9% vs 47% EU)
- Reduced area of green spaces in urban areas compared to the European minimum standard and WHO recommendations (19sqm/place vs. the recommendation of 26sqm EU or 50sqm WHO)
- Degree of coverage with incomplete water supply and sewerage services: 65% for wastewater discharge and 76% for water supply
- Significant number of low-energy public and residential buildings
- High level of pollution in urban centers, mainly due to transport
- High share of households in rural areas that use low efficiency heating systems – wood

OPPORTUNITIES OF THE CENTRU REGION FOR THE TRANSITION TO THE CIRCULAR ECONOMY



Particular advantages that can facilitate the transition to a circular economy in the component localities and cities :

- 49% of the region's area is covered by Natura 2000 sites
- Over 48% of the region is occupied by mountainous areas
- Over 37% of the area of the Centru Region is occupied by forests and forest vegetation
- Prerequisites for practicing organic farming
- Development of ecotourism, mountain and rural tourism Continuous development, including in 2020, of environmental protection infrastructure: the degree of coverage of the population with sanitation services is over 93%, the share of the population connected to the sewage network is over 65%, and the share of the population with access to the water supply system reached 76% of the total resident population.
- The signatories of the Covenant of Mayors on Climate and Energy (Alba Iulia, Ocna Mureș, Brașov, etc.) in the region are actively engaged in the preparation and implementation of the Action Plan on Sustainable Energy and Climate (PAEDC), which addresses both mitigation and adaptation to change climate change before 2030.
- There is a balanced spatial urban infrastructure, with real inter-relationships in the economic, social and administrative field. The degree of electrification of the railway network is higher than at national level, and urban transport services and urban road networks are experiencing a continuous modernization.
- Circular islands that can be replicated in other communities
- Universities and research institutes present in all counties of the region



REGIONAL POLICIES

REGIONAL PARTNERS IN THE PLANNING AND PROGRAMMING ACTIVITY 2021/2027



Regional Planning Committee 43 member organizations (6 county working groups, 7 thematic working groups)

Elaboration of Regional Development Plan for Centru Region 2021/2027
Monitoring RDP Centru 2014/2020

Regional Innovation Consortium – 39 member organizations: clusters, companies, universities, administration

Development, monitoring and implementation of RIS3 2014/2020
RIS3 updated 2021/2027

Our vision for 2021/2027



is for the Centru Region to become a cleaner region, attractive to its inhabitants and tourists, with a competitive economy based on knowledge and innovation in which caring for the environment and the rational and sustainable use of resources is the goal of every citizen



REGIONAL DEVELOPMENT PLAN CENTRU 2021-2027

STRATEGIC AREAS



DS1 Territorial development, sustainable urban development

DS2 Economic competitiveness, research and development, innovation and smart specialization

DS3 Human resources, social inclusion, employment and health

DS4 Environment, energy efficiency and climate change

DS5 Tourism and cultural heritage

DS6 Rural development, agriculture and forestry

Circular Economy



D.S.4. ENVIRONMENT, ENERGY EFFICIENCY AND CLIMATE CHANGE

Specific priorities



P.4.1 Increasing the quality of the environment in urban and rural settlements in Centru Region

- 4.1.1 . Environmental infrastructure & technical and urban utilities
- 4.1.2 Increasing the quality of the environment in urban and peri-urban areas as well as in areas affected by historical pollution
- 4.1.3 Sustainable and smart transport and urban mobility
- 4.1.4 Increasing the administrative capacity of local and county authorities, transport operators to develop sustainable mobility projects

P.4.2 Increasing the efficiency & use of energy and other resources by implementing clean solutions and technologies that facilitate the transition to the circular economy

- 4.2.1 Energy efficiency in public and residential buildings
- 4.2.2 Intelligent energy systems, based on low energy consumption and increased use of RES and alternative fuels
- 4.2.3. Increasing the capacity of public and private actors to contribute to the transition to the circular economy

P.4.3 Protection and conservation of the regional biodiversity

P.4.4 Climate change mitigation and prevention of natural hazards



SMART SPECIALISATION STRATEGY FOR CENTRU REGION 2021-2027 (RIS3 CENTRU)

- RIS3 Centru aims to boost innovation in Centru Region by using the existing regional advantages & assets

Centru Region RIS3 Domains

Agriculture and food industry

Forestry, wood processing, furniture production

Automotive and mechatronic industries

IT and creative industries

Textile and leather industry

Health

Aerospace industry

Tourism

Sustainable built environment



RIS3- Sustainable Built Environment

-a perspective of sustainable development based on innovation



The aim of RIS3 Centru for the next 7 years is to provide the direction and to concentrate the efforts to transform Centru Region into a region of knowledge and sustainable growth

The objectives of RIS3 Centru are:

Objective 1. Support the creation of knowledge and innovation in regional areas of excellence;

Objective 2. Industrial modernization of regional sectors of excellence;

Objective 3. *Integration into regional, European and global knowledge flows;*

Objective 4. Innovation for sustainable communities;

Objective 5. Support the digitization of the economy and society.



Centru Region strengthens and capitalizes on its innovation potential, adopts changes in the technological and industrial paradigm and intelligently and sustainably harnesses regional specificities



RIS3- Sustainable Built Environment

Envisaged areas



- **Energy efficiency**
- **Sustainable and energy efficient buildings;**
- **Efficient and sustainable communities:**
 - Integrated spatial planning;
 - Better use of the existing built space, increasing the surface of green areas & the quality of urban landscapes in the region;
 - Preservation and sustainable use of the existing built stock
 - Development of support infrastructure and ensuring efficient transport routes;
- **Promoting the production of energy from renewable sources by capitalizing on local sources;**
- **Proper management of resources;**
- **Actions to improve the urban environment, including rehabilitating polluted sites and reducing air pollution;**



Main policies and resources mobilized

Cohesion Policy 2021-2027

OP1 – an Innovative Europe: 25% of total budget
OP 2 – a Greener Europe: 35% of total budget
OP 5- A Europe more closer to citizens

Just Transition Mechanism – Just Transition Fund

17.5 Billion Euro MFF
10 billion Euro, Next Generation EU

▶ Next generation EU - Recovery and Resilience Mechanism

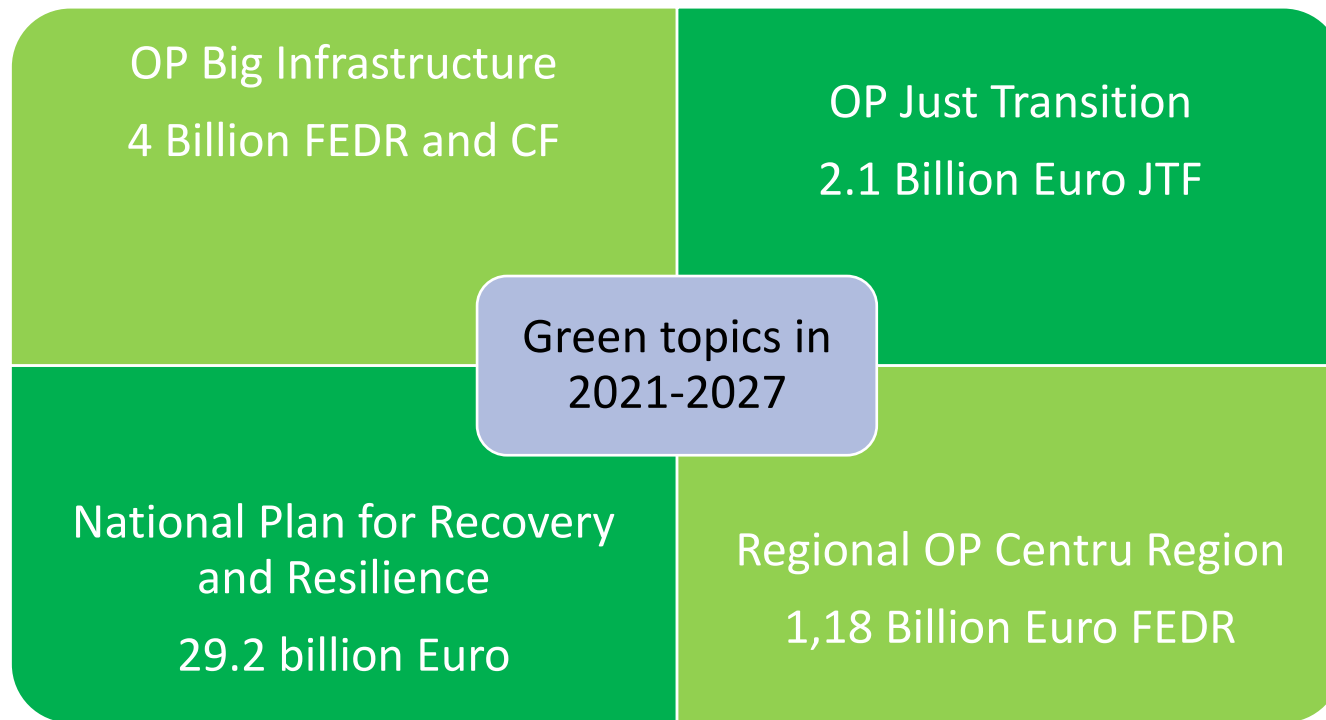
757 billion Euro; 37% for Green Transition



Programs and interventions for circular economy Romania 2021-2027



NATIONAL PROGRAMS THAT SUPPORT COMPONENTS OF CIRCULAR ECONOMY



ROP Centru 2021-2027

Centru Region will become a cleaner region, attractive to its inhabitants and tourists, with a competitive economy based on knowledge and innovation in which caring for the environment and the rational and sustainable use of resources is the goal of every citizen.

- RDA Centru nominated MA for ROP 2021-2027 – OUG 122/2020
- Version 2 of ROP Centru 2021-2027



- Contains types of investments related to all 5 policy objectives
- Priority axes - 8 axes for investments + one axis of technical assistance
- Proposed budget: 1390.15 million Euros, of which 1181.62 million Euros FEDR

ROP 2021-2027 - Centru



N. crt	Priority axis	Proposed types of intervention	Allocation FEDR (mil. eur)
1.	A competitive region through innovation and dynamic enterprises for a smart economy	<ul style="list-style-type: none"> • Development of CDI and TT structures for the benefit of enterprises • Developing connections and synergies Innovative enterprises SME growth through investments • Support structures for SME development • Complementary activities aimed at developing skills 	229,991
2.	A digital region	<ul style="list-style-type: none"> • Digital communities for a smart region with three sub-operations: smart-city, supporting the digitization of public services at local level, pilot regional platform for open innovation in the field of smart-city • Digitization of SMEs • Innovative digital hubs 	116,381
3.	A region with environmentally friendly communities	<ul style="list-style-type: none"> • Renovation of the regionally built fund: Energy efficiency of residential buildings, Energy efficiency of public buildings • Investments that contribute to the conservation of urban biodiversity and promote green and / or blue infrastructure in urban areas, including complementary activities 	198,715



ROP 2021-2027 - Centru



Nr. crt	Priority axis	Proposed types of intervention	Allocation FEDR (mil. eur)
4.	A region with sustainable urban mobility	<ul style="list-style-type: none"> • Development of clean urban infrastructure • Investments in rolling stock and related transport infrastructure; • Development of infrastructures for alternative fuels; • Development of urban mobility management systems PMUD-based investments	198,715
5.	An accessible region	<ul style="list-style-type: none"> • Modernization of county road infrastructure - according to regional prioritization • Solutions for traffic decongestion / fluidization - county seat municipalities 	168,031
6.	An educated region	<ul style="list-style-type: none"> • Investments in educational infrastructures for education: early and compulsory, special, IPT, university 	77,837



ROP 2021-2027 – Centru



Allocation
FEDR (mil. eur)

Nr. crt	Priority axis	Proposed types of intervention	Allocation FEDR (mil. eur)
7.	A region with sustainable tourism	<p>Sustainable development of rural communities by highlighting their natural and cultural tourism potential</p> <ul style="list-style-type: none"> Improving the tourism infrastructure in areas with valuable tourist potential; Conservation, protection and sustainable use of cultural heritage <p>Increasing the social inclusion of children and young people through the development of public tourism assets and tourism services addressed to them – Investments in school camp infrastructure</p>	21,265
8.	An attractive region	<p>Sustainable urban development</p> <p>Integrated regeneration of urban public spaces, including ensuring the security systems of the citizen</p> <p>Conservation, protection and sustainable use of cultural heritage;</p> <p>Investments in cultural infrastructure;</p> <p>Improving tourism infrastructure</p> <p>Based on SIDU</p>	119,809



An aerial photograph of a dense green forest. A light-colored, circular path or road winds through the trees, forming a large loop. The path is surrounded by thick foliage in various shades of green.

Thank you for your attention!

For more info do not hesitate to contact us

RDA Centru

Regional Policies and Programming Unit

12 Decebal St, Alba Iulia

Phone (+40) 258 - 818616

E-mail: office@adrcentru.ro